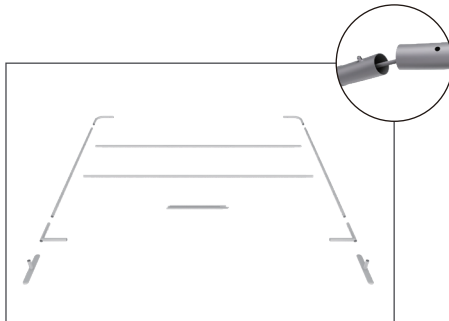


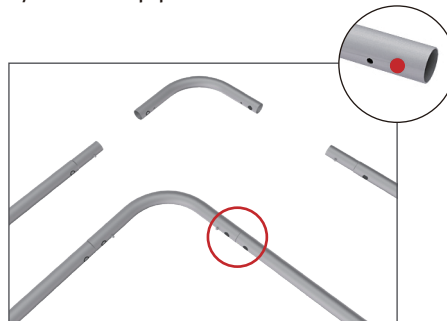
# Set Up Instructions

## WLM-2000F

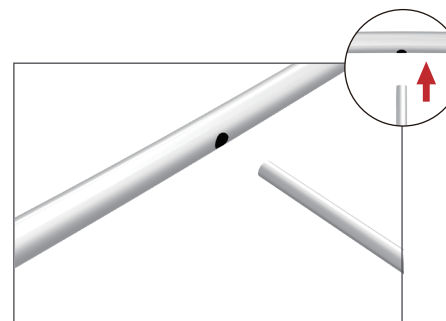
**Step 1:** Assemble straight poles by pressing and pushing together.



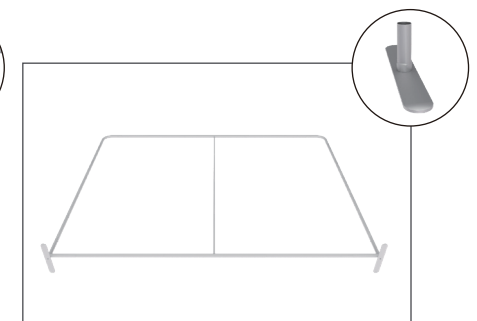
**Step 2:** Connect all corner sections to curved and straight sections of the frame by matching shape symbols on pipes.



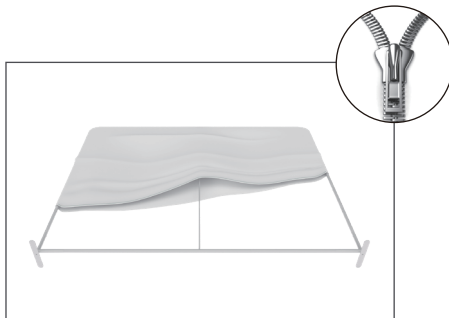
**Step 3:** Insert center support pole.



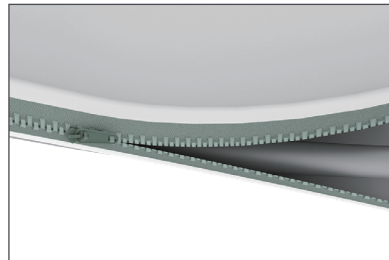
**Step 4:** Insert feet into base to complete assembled frame shown.



**Step 5:** Unzip print and lay image face up. Slide print onto frame like a pillow case.



**Step 6:** Zip the edge of graphic beyond the center point as shown to hold the center pole in place. Zip the remaining side and bottom to meet at the corner.



**Step 7:** Complete.



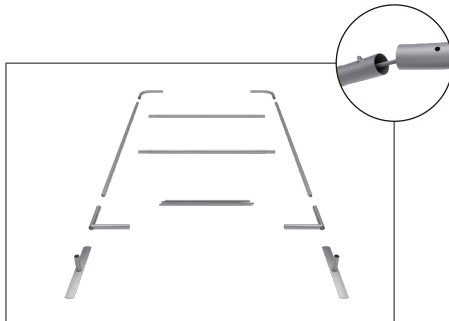
**LIGHTS:**  
(OPTIONAL) Position as desired and tighten knob to hold in place.  
**WARNING! Over tightening may cause damage to fabric image.**



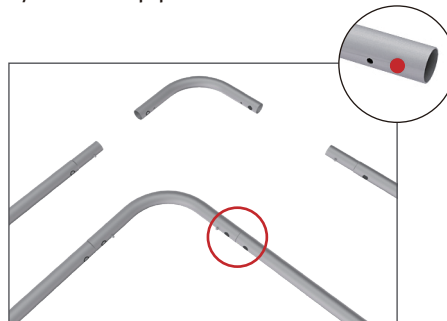
# Set Up Instructions

## WLM-2000E

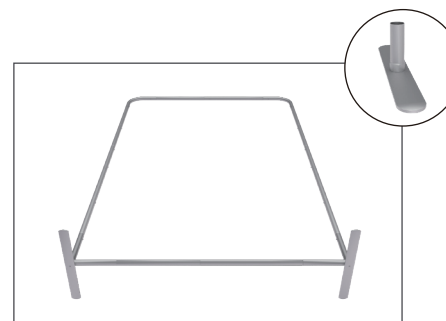
**Step 1:** Assemble straight poles by pressing and pushing together.



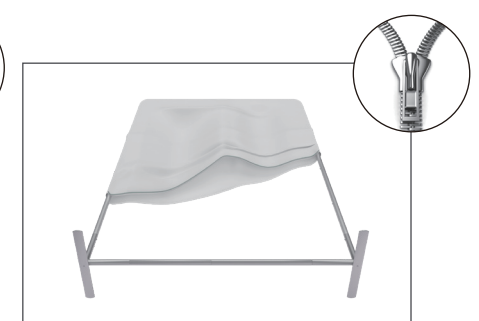
**Step 2:** Connect all corner sections to curved and straight sections of the frame by matching shape symbols on pipes.



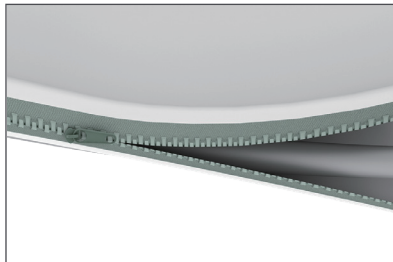
**Step 3:** Insert feet into base to complete assembled frame shown.



**Step 4:** Unzip print and lay image face up. Slide print onto frame like a pillow case.



**Step 5:** Zip the edge of graphic beyond the center point as shown to hold the center pole in place. Zip the remaining side and bottom to meet at the corner.



**Step 6:** Complete.

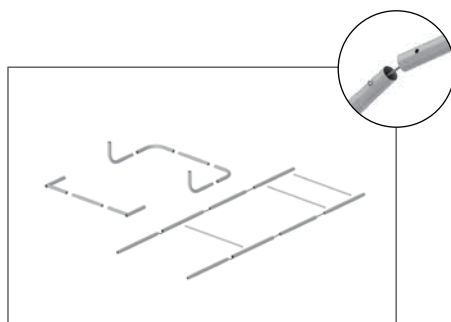
**LIGHTS:**  
(OPTIONAL) Position as desired and tighten knob to hold in place.  
**WARNING! Over tightening may cause damage to fabric image.**



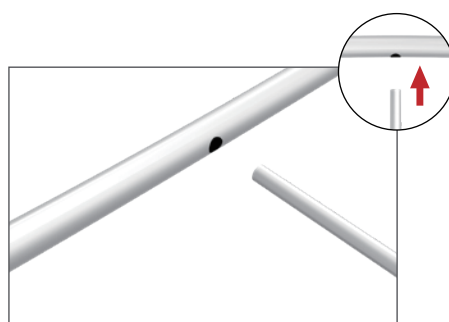
# Set Up Instructions

## WFA-SHELVING

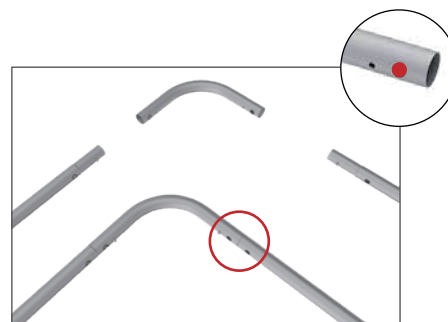
**Step 1:** Assemble each section of the frame by pressing and pushing poles together.



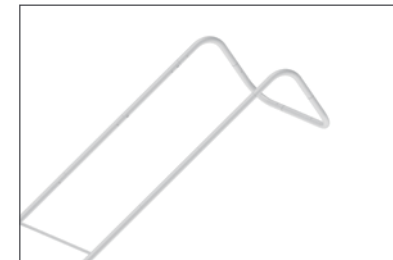
**Step 2:** Insert correct number of cross bar support poles based on Step 4.



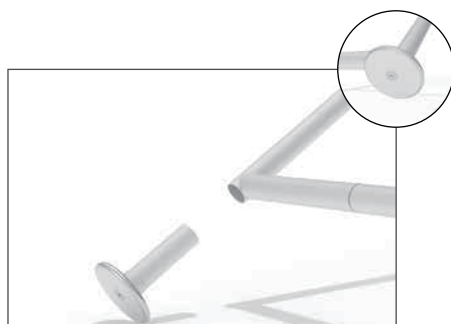
**Step 3:** Connect all corner sections to straight sections of the frame by matching shape symbols on pipes.



**Step 4:** Frame assembled.



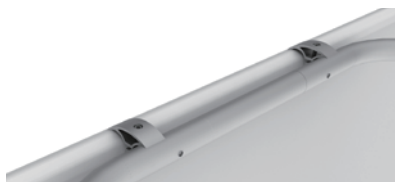
**Step 5:** Insert feet into the holes at the bottom of display.



**Step 6:** Add shelves to frame. Position and level shelves on frame before tightening clamps down with hex tool.



**Step 7:** Complete.



**ATTACHMENT TO WALL:**  
Position waterfall as desired on support wall before tightening clamps down with hex tool.

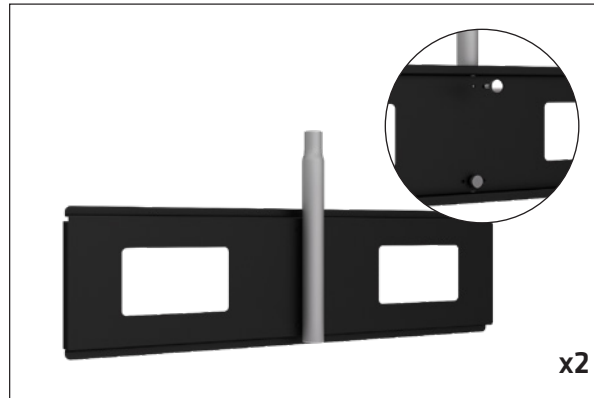
# Set Up Instructions

**WLT-P-138**

**Step 1:** Attach brackets to back of monitor with screws. Rubber spacers can be placed between the bracket and the monitor if your the back of the monitor is not flat. Choose the spacer that best fits your need. Position the VESA bracket with the **hook facing down**.



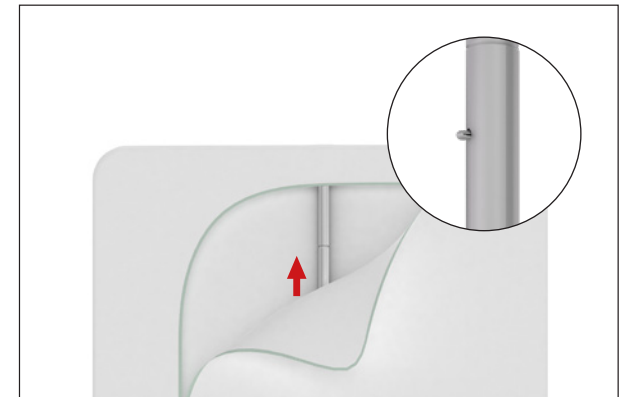
**Step 2:** Attach base plate to pole with screws.



**Step 4:** Insert base plate pole through front of graphic cutout.



**Step 5:** Attach bottom pole to top pole with push button attachment.



# Set Up Instructions

**WLT-P-138**

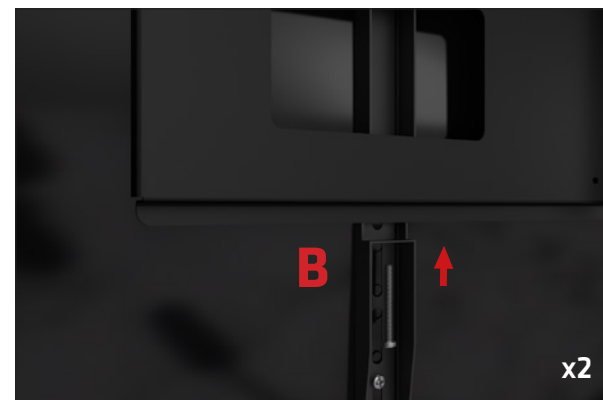
**Step 6:** Align monitor with bracket to set into place.



**Step 7: (A)** Hang the monitor onto base plate to test the positioning. Once position is correct remove monitor and add graphic to frame.



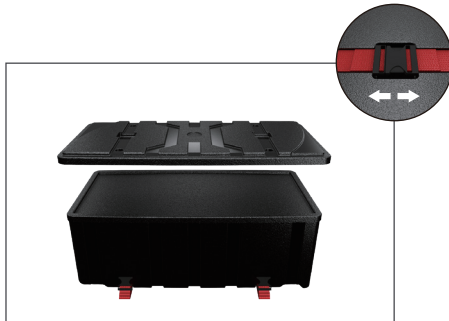
**Step 8: (B)** Hang the monitor again and put in final screws to hold monitor bracket in place.



# Set Up Instructions

## CA700-CASE TO COUNTER

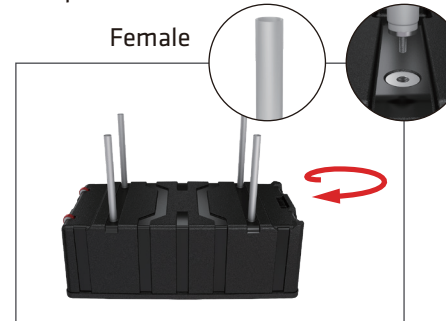
**Step 1:** Put case flat on the floor and undo straps. Lift lid and remove the contents of the case.



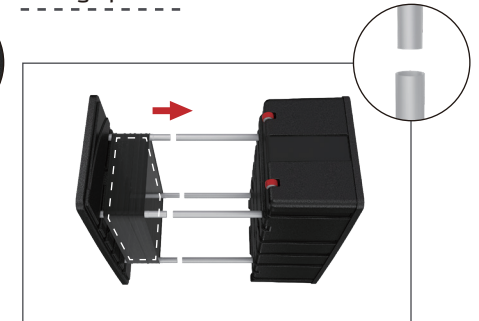
**Step 2:** Put the lid on the floor and screw the supplied vertical support poles into place.



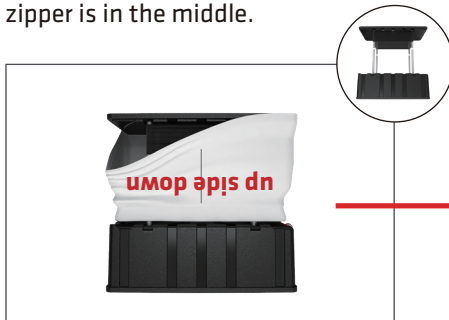
**Step 3:** Put the base on the floor with wheels up and screw the supplied vertical support poles into place.



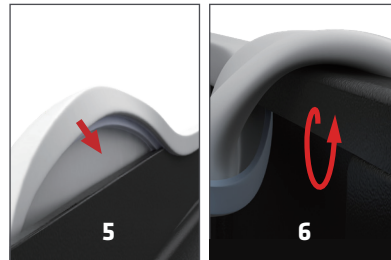
**Step 4:** Align support poles and fit the base to the lid. Press together firmly to secure. **OPTIONAL:** Install storage pocket onto lid first.



**Step 5:** Place case in a clean area upside down to place fabric print, over the case. **Start at the top with graphic up side down**, make sure zipper is in the middle.



Pull the silicone grooved edge of graphic over the top of the lid and push onto the edge. Push the groove all the way around the case until secured without overstretching.



**Step 6:** Upright the case and pull edge of graphic over the top of the base and tuck under the lip into the groove of case. Follow all the way around the case until secured.



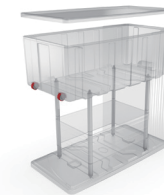
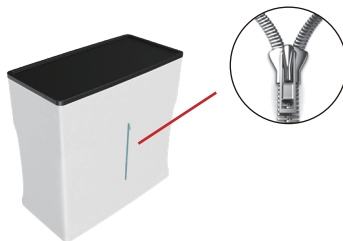
**Step 7:** Make sure that all wrinkles are out and the fabric looks straight. Press the counter top onto the case to secure.



**Note:** Do not overstretch silicone edge when installing graphic or you will end up with extra fabric that will not press on.

### STORAGE:

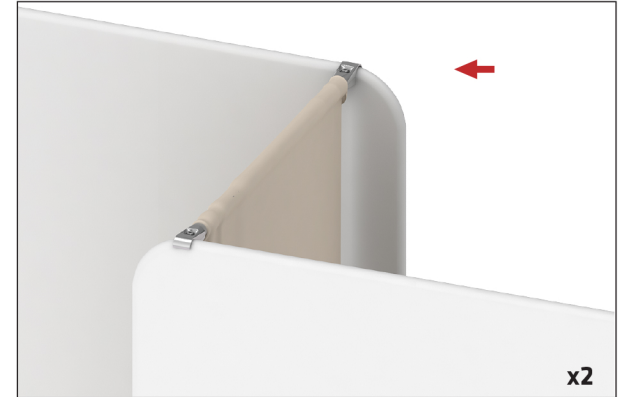
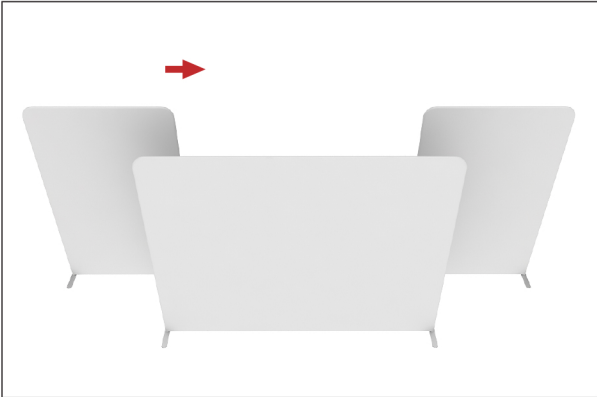
The zipper on the back is used to access storage.



## Set Up Instructions

**MACAW**

**Final Assembly:** Set up each display with desired overlap. Assemble curtain rods and slide on curtains. Attach curtain rods to the top of each frame with hex tool.



Move accessories into position to complete setup.

